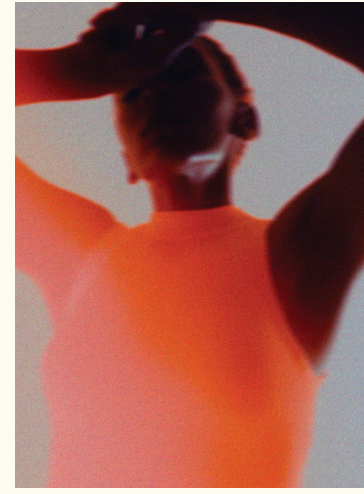




TREATMENTS

SURRENNE

2024



NEW
WORLDS OF
WONDER

⁰⁴ SIGNATURE TREATMENTS ⁰⁶ SURRENNE
SIGNATURE FACIALS ⁰⁸ DR LARA DEVGAN
¹⁰ FACEGYM ¹³ STELLA MCCARTNEY ¹⁵ MASSAGE
¹⁸ EXPERIENCE SURRENNE TOGETHER
²⁰ WET ROOM EXPERIENCES

COLLECTION

ONE

SIGNATURE TREATMENTS

SCALP AND BODY
SPA RITUAL

FOUR HANDS ULTIMATE
SYNCHRONISED
CEREMONY

ASHIATSU

COLL. 01

(90 MINUTES) £320

(90 MINUTES) £380

(90 MINUTES) £280

P. 05

Experience crown-to-toe replenishment and full-body indulgence. The treatment begins with combing, brushing, and exfoliating the scalp before applying a mask, which is finally removed with an aromatic water cleanse. Steamed herbal compresses are then applied to the head and décolleté to calm the muscles and liberate the pores. Elsewhere, the body is treated to a dry-brushing treatment from copper bristles and exfoliated using a salt mixture of seaweed and Dead Sea Salt, while a back, neck and shoulder massage is assisted by aromatherapy poultices, nourishing body oils and balms.

The restorative power of touch is amplified in this transcendent treatment comprising simultaneous contact by two practitioners. A careful choreograph, formulated to alleviate tension at the deepest level of the muscular tissue, is facilitated by the use of adaptogenic Chakra oil. Adaptogenics are naturally derived extracts utilised to reduce stress. Here they infuse light, aromatic oils whose purpose is to both relax the body and gently reinvigorate its energetic systems. A combination of light strokes and more concerted pressure soothes the muscles and fascia, resulting in the rebalance of both body and mind.

Ancient wisdom is used to alleviate a host of modern complaints, with this deep-tissue massage hailing from Japan. Ashiatsu – translated to ‘foot pressure’ – is delivered on the soft support of a futon mattress by a skilled practitioner. Applying the heels, toes, arches, and occasionally the whole foot surface to various body parts, particularly the larger muscles of the legs and back body, they are cleansed of any aches or discomfort. Less physically demanding than other forms of traditional deep-tissue massage, this treatment is nevertheless suited to those who regularly participate in sport.

COLLECTION

TWO

SURRENNE
SIGNATURE
FACIALS

SURRENNE OXYGENEO FACIAL:
HYDRATE, ILLUMINATE, GLAM

SURRENNE DETOX:
GREEN TEA FACIAL

SURRENNE BALANCE:
CHARCOAL FACIAL

COLL. 02

(60 MINUTES / 90 MINUTES)
£250 / £300

(30 MINUTES) £150

(30 MINUTES) £150

P. 07

Unlock the skin’s natural powers of healing and rejuvenation. This groundbreaking treatment, combining four vital technologies — Oxygeneo, Tripollar RF, ESA and Ultrasound — offers immediate radiance to the complexion of the face, neck, and décolleté by replenishing oxygen and promoting renewal. Following a thorough consultation, the process is tailored to the individual skin-care requirements of every client and is boosted by the application of a specially developed Geneo Serum rich in essential Vitamins E and B, as well as Hyaluronic Acid.

Harnessing the well-documented and fortifying properties of the tea leaf at its most ripe, the Surrenne Detox Green Tea Facial was developed to boost the skin’s ability to resist external stressors. Powerful antioxidants supplied by Copper Gluconate and Green Tea Extract are a first defence against the free radicals commonly found in urban environments. Further benefits of these properties include refining skin texture and lending a bright, more clarified appearance. The equivalent of drinking a daily cup of warm tea, the effect is one of balance, rejuvenation, and joy.

For skin seeking equilibrium, and relief from the effects of excess oil, charcoal has been used for millennia as a curative friend. An abundant natural resource, the Bamboo strain found commonly in parts of East Asia is particularly effective at detoxifying and soothing the body’s largest organ. Used here in combination with Camu-Camu extract, which is infused with vitamins and antioxidants, the effect is one of instant gratification and harmony. Skin enjoys a lasting, healthy appearance and is spared the worry of excess shine.

DR LARA DEVGAN

PREEMINENT IN THE FIELD OF PLASTIC SURGERY AND AESTHETICS, DR. LARA DEVGAN'S CLIENTS ARE AMONG THE MOST PHOTOGRAPHED IN THE WORLD. FEATURED IN VOGUE AND HARPER'S BAZAAR, HER AWARD-WINNING PRACTICE AND SKINCARE LINE HAVE BEEN PRAISED FOR INTEGRATING SCIENTIFICALLY BACKED INGREDIENTS OF THE UTMOST EFFICACY WITH A SENTIMENT OF LUXURY AND DECADENCE.

BRIGHTENING
FACIAL

(60 MINUTES) £220

Beginning with a facial steam, this definitive treatment resolves matters of dullness, hyperpigmentation, melasma, discolouration, and sun damage, utilising antioxidant-rich products from the Dr. Devgan line. The process is followed by a deep cleanse harnessing the benefits of phyto-peptides and vitamins, a microdermabrasion scrub to purify, and an antioxidant serum applied using lymphatic massage. Once purified and sculpted, the Gold Collagen Mask is then applied to the face to promote skin resurfacing; followed by Peptide Eye Cream, Resveratrol Night Cream, and Niacin+Squalene Neck Firming Cream for lasting hydration and glow.

RESTORATIVE
PERFORMANCE
FACIAL

(60 MINUTES) £220

A relieving treatment for skin that is subject to strenuous activity: following a facial steam, a deep, refreshing cleanse and a microdermabrasion scrub, extractions are performed to rid the skin of impurities. Alpha Beta Hydroxy Pads, followed by a gentle, microchemical peel using Salicylic, Glycolic, and Lactic Acid are then applied to prevent any further build-up. Once cleansed, a relaxing deep tissue is facilitated by the niacinamide-infused Hyaluronic Serum which also has the benefit of promoting the production of collagen and elastin. This is then followed by the nourishing Gold Collagen Face Mask, before a lasting dose of hydration from Peptide Eye Cream, Resveratrol Night Cream or Advanced Recovery Cream, and Niacin+Squalene Neck Firming Cream.

THE
REJUVENATING
FACIAL

(90 MINUTES) £300

For depleted skin in search of nourishment, this specialist treatment begins – like all of our facials – with a steam, followed by a deep, refreshing cleanse and a microdermabrasion scrub. Here the latter is combined with a deep-tissue lymphatic massage to rid the skin of impurities and promote a more sculpted appearance. Improving barrier protection and bolstering the skin against external stressors, Niacinamideinfused Hyaluronic Serum and Vitamin C+B+E Ferulic Serum are applied liberally before the Gold Collagen Mask which promotes skin resurfacing and collagen production. Peptide Eye Cream, Resveratrol Night Cream, and Niacin+Squalene Neck Firming Cream provide lasting nourishment and improve the appearance of fine lines.

FACEGYM

CRYO MEDI LIFT
WORKOUT

FACEGYM
RADIO FREQUENCY

FACEGYM
CRYO CONTOUR

FACEGYM
CLEAN AND LIFT

SIGNATURE
SCULPT

COLL. 02

(60 MINUTES) £230

(75 MINUTES) £330

(60 MINUTES) £215

(60 MINUTES) £200

(30 MINUTES) £110

P. 11

A four-part programme to restore life and vitality to the complexion. This treatment combines our signature muscle manipulation techniques with your choice of Medi-Lift EMS technology (face or eye), Active Roller (a non-invasive manual micro needling tool), or a high-pressure shot of Cryo Oxygen. To finish is a relaxing neck and shoulder massage.

A more intense variation on our classic treatment: the Signature Sculpt workout is given an upgrade in the form of additional radiofrequency. After just one transformative session, skin appears plumper and more sculpted.

Our most intense workout, this facial provides deep hydration and contouring, by combining FaceGym’s energetic Signature Sculpt with a potent shot of frozen CO2. The jolt to the system revitalises and replenishes.

A vibrant treatment to reawaken, combining FaceGym’s energetic Signature Sculpt with a deep cleanse and a SKIN IV nutrient-rich infusion. The result is a noticeable healthy glow and more sculpted appearance.

The definitive FaceGym experience. This high-intensity facial workout combines our legendary muscle manipulation techniques with our results-driven skincare and EMS technology for a powerful face sculpting session that lifts and refines. It also stimulates collagen production, improves circulation, aids lymphatic drainage, and enhances definition of the facial contours.

FACEGYM
VITAMIN
SHOT

FACEGYM
CRYO OXYGEN
SHOT

FACEGYM
HYLAURONIC ACID
ROLLER

FACEGYM
RADIO
FREQUENCY

COLL. 02

£35 ADD-ON

£120 ADD-ON

£110 ADD-ON

£95 ADD-ON

P. 12

A quick, revitalising surge of vitamins A, C, E, and B5 to promote health and radiance.

A non-invasive and deeply hydrating booster for targeting dull, dehydrated skin. The frozen shot of CO2 also contains hyaluronic acid to plump fine lines, enhance skin texture and improve hydration.

A booster to amplify the skin-plumping and hydrating benefits of a FaceGym workout. Microneedles filled with pro-grade hyaluronic acid, peptides, and antioxidant Centella asiatica work to rejuvenate the skin from within, increasing elastin and collagen production. Each treatment includes a roller to take home and use again.

One area: Eye, lip, jaw, or cheek.

STELLA BY STELLA MCCARTNEY

STELLA BY
STELLA MCCARTNEY

(60 MINUTES) £220

Our most sustainable facial treatment harnessing the healing power of mother nature. Using 99% organic ingredients, rich in nutrients, your skin will enjoy a thorough cleanse. A facial massage follows, incorporating reflex points, lymphatic drainage, and deep tissue techniques to release any obstruction in the connective tissues of the face and neck. Deeper relaxation, and greater lymphatic flow, allow for plumpness of the skin and the smoothing of fine lines.

COLLECTION

THREE

MASSAGE

I NEED IT ALL

DOWNTIME

BALLET BODYWORK

COLL. 03

(60 MINUTES / 90 MINUTES)
£195 / £260

In this tailor-made treatment, an in-depth consultation is conducted to understand your specific needs. A trained and multi-disciplinary therapist will then curate an hour-long service comprising massage techniques from different traditions, including deep tissue, Thai massage, Ayurveda, Shiatsu, and trigger points. This is a particularly effective approach for those suffering from specific aches, pains, or ailments and seeking targeted treatment.

(60 MINUTES / 90 MINUTES)
£195 / £260

This restorative procedure is a variation on Shirodhara, an Ayurvedic procedure in which warm adaptogenic oil is poured from a vessel onto the forehead’s third eye chakra. Here, the therapist conducts a similar routine by hand, followed by a deep head massage to improve sleep quality, relax the nervous system, and alleviate stress. The treatment continues with a full-body massage, comprised of elongated strokes to enhance relaxation. The feet are then warmed, and reflex points are massaged. All of which takes place on the comfort of a heated water mat.

(60 MINUTES / 90 MINUTES)
£195 / £260

Inspired by the techniques used to revive weary ballet dancers, over the course of the treatment, magnesium is applied to the muscles and joints in a tailor-made approach to suit your specific needs. A deep tissue massage is then performed on the legs, feet, and back. Additionally, cool and heat elements are introduced to the body, along with assisted stretches to encourage muscle recovery. The 90-minute treatment also includes a 30-minute deeply restorative and comforting infrared sauna session.

P. 16

DEEP TISSUE
ADAPTOGENIC

ASHIATSU

MATERNITY
MASSAGE

COLL. 03

(60 MINUTES / 90 MINUTES)
£195 / £260

(60 MINUTES / 90 MINUTES)
£210 / £280

(60 MINUTES / 90 MINUTES)
£195 / £260

P. 17

Adaptogenics are natural ingredients celebrated for their ability to calm and soothe. Supplied here in aromatic oil form, they are applied to the skin using a range of techniques, including deep tissue massage, stretching, infrared heat, live sound therapy, and biodynamic approaches to provide you with stress reduction, pain relief, emotional release, a sense of security and renewed confidence in your body. This adaptogenic massage goes beyond the surface, helping to shift energies, connecting you with your deeper self. Discover profound relaxation and balance.

The Japanese tradition of Ashiatsu is a deep tissue compression massage in which the therapist delivers broad, consistent pressure using their feet and body weight. Working with gravity, and parallel bars above the massage table for balance and support, this is a fluid and relaxing alternative to other deep-tissue techniques. It is enhanced using your choice of cream or oil.

Gentle, cautious, and attentive, this specialist treatment is designed for expectant and new mothers alike, from the second trimester through to post-partum. Emphasis is on the alleviation of muscle tension and fatigue, with gentle strokes applied to the whole body and specific areas of concern, while assisting to ease any other attendant discomfort during and after pregnancy.

EXPERIENCE SURRENNE TOGETHER

A SELECTION OF PRIVATE EXPERIENCES
FOR COUPLES AND DUOS – THE PERFECT
OPPORTUNITY TO RELAX WITH A FRIEND OR
LOVED ONE. PLEASE CONTACT SURRENNE
EXPERTS TO CREATE PRIVATE BESPOKE
RITUALS SELECTED FROM OUR EXTENSIVE
TREATMENT MENU.

MOTHER
AND DAUGHTER

(60 MINUTES) £340 FOR TWO

A restorative way to consolidate bonds and spend quality time. Tune out from the world and unwind in our relaxing environs while enjoying a side-by-side massage. Relieve stress, experience deep muscular decompression, and relish in an aromatic ambience alongside the company of your nearest and dearest.

COUPLES
RITUAL

(90 MINUTES) £450 FOR TWO

Experience harmony together, with a relaxing side-by-side massage specifically designed to balance the body's energy points. Warm adaptogenic oil is also poured onto the forehead's third eye chakra, followed by a scalp massage to improve sleep quality, relax the nervous system and treat stress, anxiety, and insomnia. The treatment continues with a full-body massage.

COLLECTION

FOUR

WET ROOM EXPERIENCES

BESPOKE CLEANSE
& PURIFY

SIGNATURE PURIFYING
WHITE ONYX WET SPA
EXPERIENCE

HAIR CLEANSE

PURIFYING SCALP
TREATMENT

COLL. 04

(60 MINUTES) £210

(90 MINUTES) £280

(15 MINUTES) £50 ADD-ON

(30 MINUTES) £75 ADD-ON

P. 21

This classic full-body wet spa experience starts with an aromatic steam bath to open the pores and activate the senses. Olive-based soap is then used to deep cleanse the skin before an exfoliation mitt is applied to increase circulation. Your chosen clay body mask is painted on to the whole body, while a facial mask is applied, and the hair is cleansed. The treatment is finished with a personal choice of balms, oils, or whipped shea butters.

This full-body bathing experience is performed in our white onyx wet spa treatment room. Recline on a bed made of this purifying crystal, while enjoying a body cleanse with organic olive soap and a full-body polish using Himalayan and Red Alea Salts. Our signature white clay and rhassoul body mask is then applied to the body, while a facial cleanse and hair oiling follows. The mask is removed with an aromatic milk cleanse and the treatment completed with the application of our Signature Surrenne balm and oil.

Following your treatment, a hair and scalp cleanse are performed using vegan silk peptide and keratin shampoo and conditioner. This is followed by the application of a soothing scalp serum and hair oil.

The scalp is deep cleansed using vegan silk peptide and keratin shampoo. It is then exfoliated with jojoba beads infused with mint to reawaken and refresh. A nourishing scalp mask is then applied while you receive a deep intensive scalp massage where gua sha is used to stimulate the blood vessels, and the hair is combed. This is finished with scalp serums and ultra-light hair oil.

W